

ABERDEEN TO LAURENCEKIRK MULTI-MODAL STUDY STUDY BRIEFING PAPER

SEPTEMBER 2021



Introduction

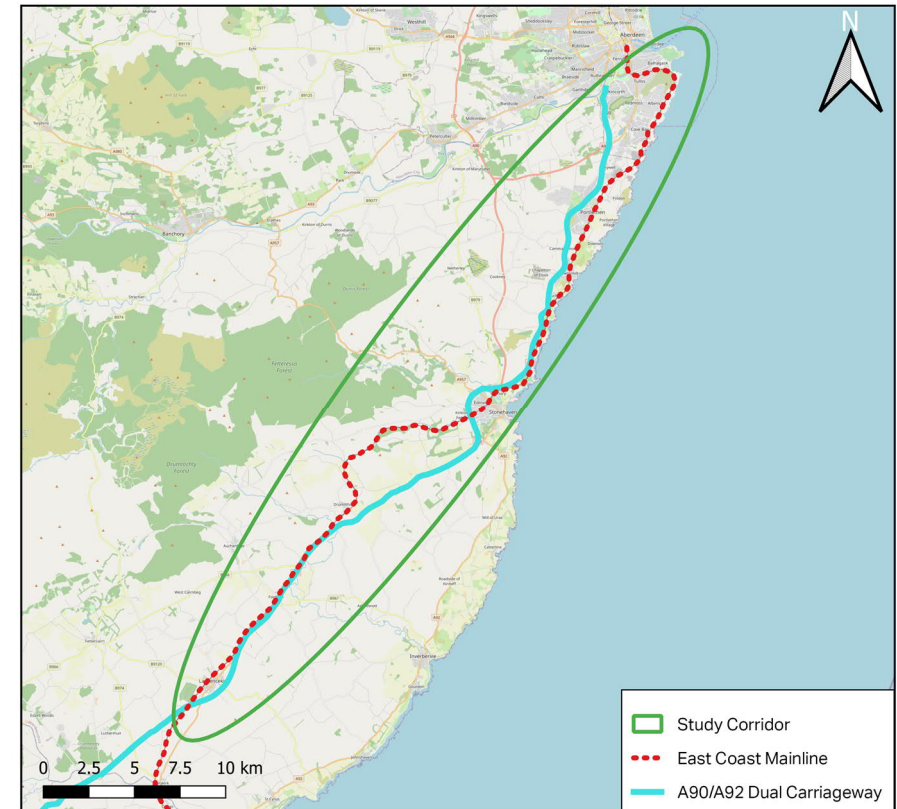
Nestrans, the Transport Partnership for Aberdeen City and Shire, has commissioned consultants AECOM to undertake a multi-modal study along the strategic transport corridor between Aberdeen and Laurencekirk.

The main aim of the study is to confirm current and future strategic accessibility problems and opportunities along the corridor and to identify options for achieving an increased public transport (rail and bus) and active travel (walking and cycling) mode share for trips along the corridor, particularly during regular commuting times.

The study will be undertaken in line with Scottish Transport Appraisal Guidance (STAG), building on previous research undertaken along the study corridor by Nestrans and partners over recent years.

Work is being funded by Transport Scotland's Local Rail Development Fund. While rail options including the potential for new stations south of Aberdeen will form part of the study's considerations, the study will examine a wider range of multi-modal interventions, including improvements to the active travel and bus networks, designed to increase sustainable travel along the corridor.

This briefing paper has been prepared to set out the scope of the study, the approach that will be taken by the study team and how the public and stakeholders can get involved through the engagement process.



Study Approach

A number of key tasks will be undertaken to complete the study including:

- Identification and analysis of transport-related problems and opportunities on the corridor, including consideration of how travel patterns could be impacted in post COVID-19 context.
- Review of the local, regional and national policy context, previous studies, and transport data analysis.
- Development of Transport Planning Objectives (TPOs) to encapsulate the aims of any interventions and to guide the development of solutions.
- Option generation, sifting and development to identify the best performing options suitable for further assessment through subsequent appraisal stages of the STAG process.

The outcomes of this study approach will provide Nestrans with the ability to develop outline business cases for deliverable options, potentially progressing them to design and implementation stages in the future.



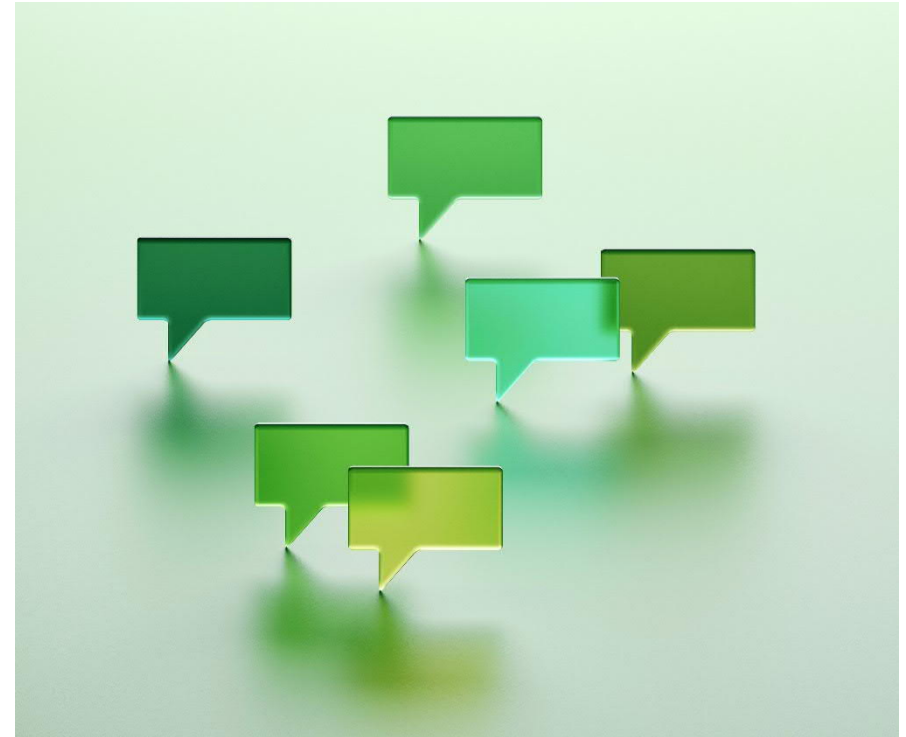
Stakeholder Engagement

Participation and consultation are key elements of a STAG study to ensure the interests of stakeholders are considered in an inclusive, open and transparent manner.

Initially, due to the difficulties related to completing consultation during the COVID-19 pandemic, initial stakeholder engagement activities focussed on making efficient use of recent consultation outcomes relevant to the study corridor, supplemented by telephone interviews with public transport operators across the bus and rail industries.

However, a second phase of engagement is now commencing to collect information from corridor users. This will include direct correspondence with key stakeholders and an online survey, which will be available to complete at www.nestrans.org.uk/southcorridorstudy from Monday 20th September until Monday 18th October 2021.

The outputs of all engagement activity will directly feed into the identification of study problems, issues, constraints and opportunities and inform the appraisal of options in accordance with STAG.



Contacts

Kelly Wiltshire
Transport Executive (Travel Plans and Delivery)

Nestrans
Archibald Simpson House
27-29 King Street
Aberdeen
AB24 5AA
kwiltshire@nestrans.org.uk

Kathryn MacKay
Senior Transport Planner

kathryn.mackay@aecom.com